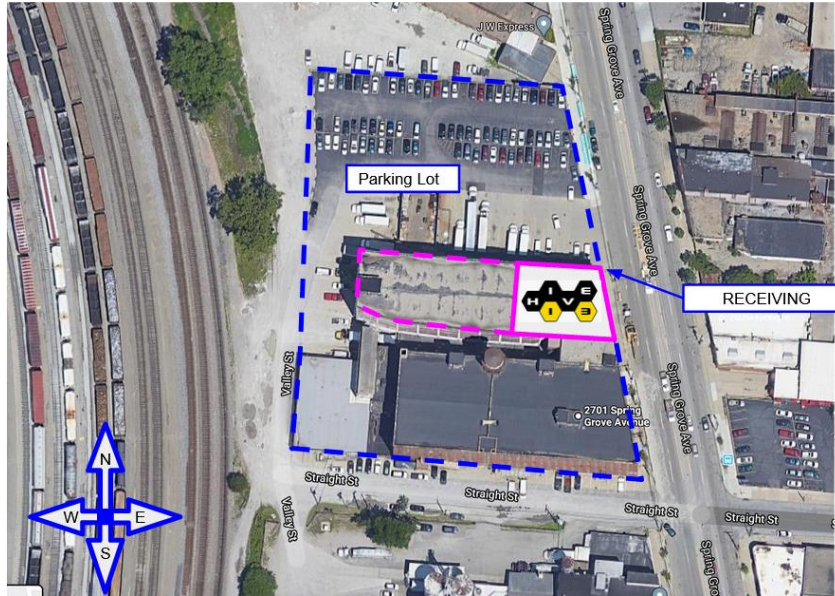


Please Note: Hive13 has moved into a new location at 2701 Spring Grove  
**As with all moves Things Are Still Changing. This is the answer for now.  
It will be updated as things change.**

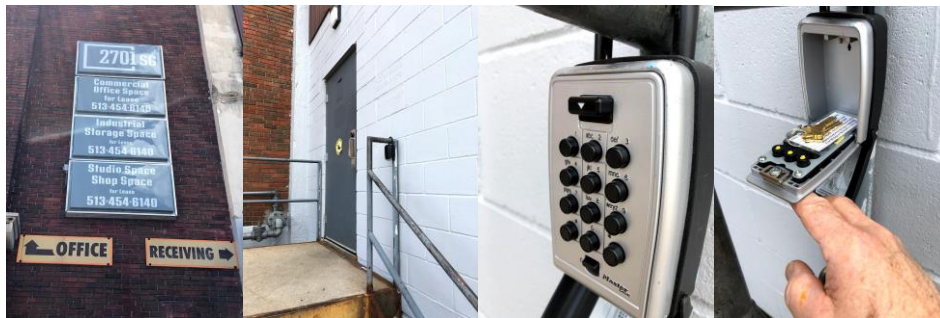
Park in the marked spaces in the parking lot to the North of the building.  
Please don't park at the dock doors Unless you are Loading Material.



2701 Spring Grove Ave.

- Former KOI Auto Parts warehouse, six floors, two wings: North wing is all concrete construction
- Hive13's initial space rental will be 11,500 sq.ft. on the 3rd floor of the North Wing.
- The initial 3rd-floor space can be expanded to 17,500 sqft.
- Off-street parking lot for 80 cars

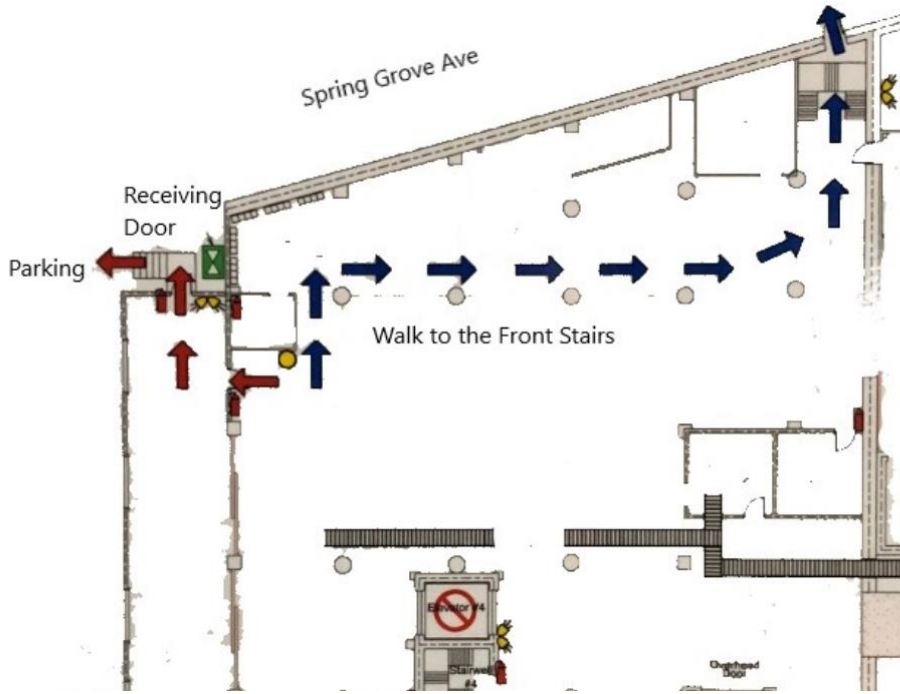
Enter 2701 the building from the RECEIVING door at the North East corner -  
**MASKS ARE REQUIRED UNTIL FURTHER NOTICE BY HIVE13**



The Door Code + # is the lock box code. Use the key with green on it. Then put it back. Use the reset button at the bottom of the keypad to clear the lock for entering the code. After you open the door, put the key back in the box so that others can come in.

Please, Keep the Receiving Door locked.

Once inside the building - Follow the signs for Hive13 on the third floor. Use the Front Stairs.



Hive13 is on the third floor.

Enter the door code and push the red double arrow key. The door will open.



Inside - Log in at the desk to the left.

**Other Doors**



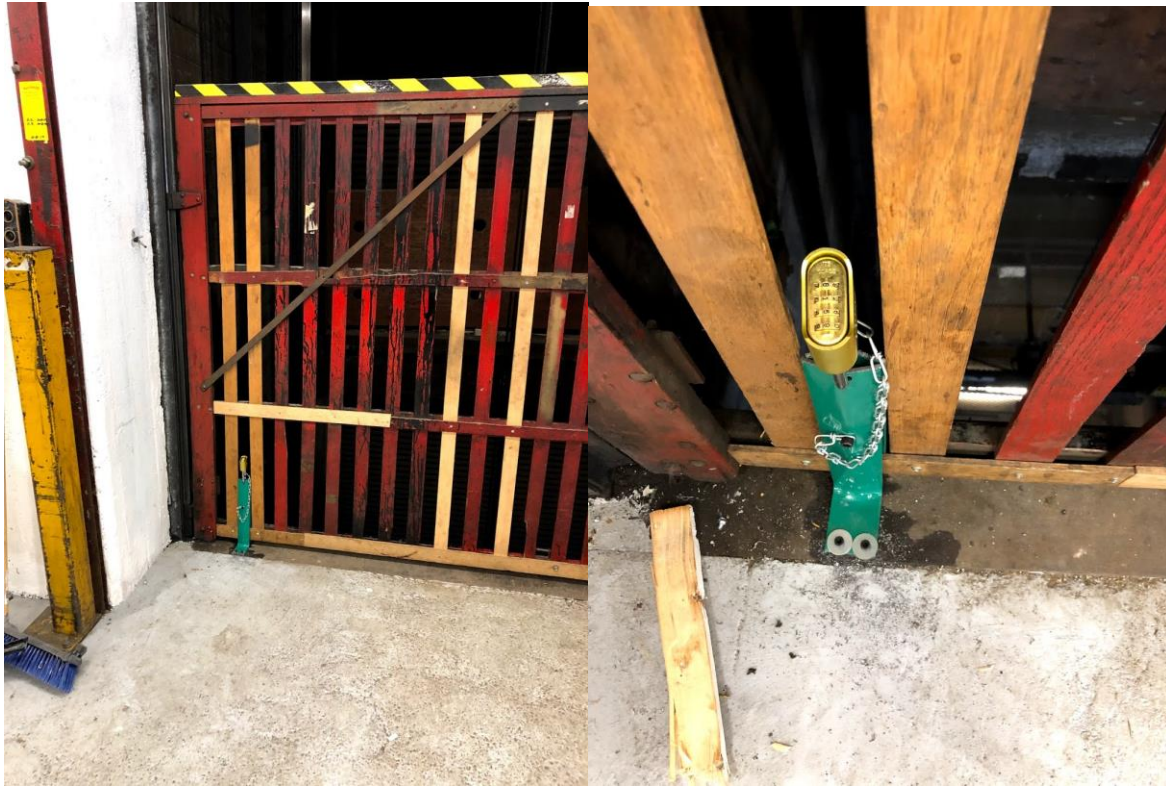
**Elevator Gates are Locked on the 3rd Floor.**

You can reach the combination from inside or outside of the elevator.

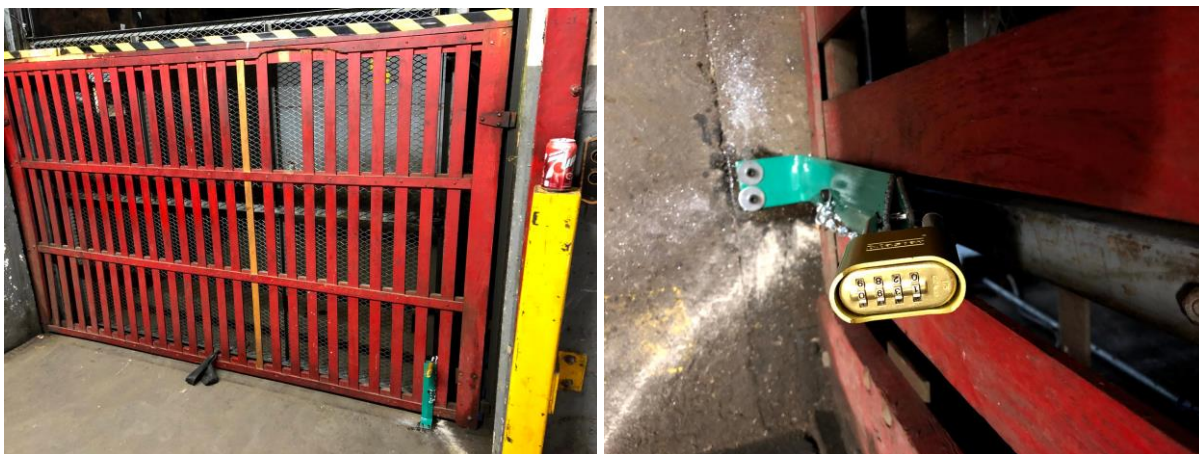
The elevators should be locked unless they are in use.

Both elevator combination locks use the Door Code. Enter the code, then push the lock against the shackle to open. To lock it, change the dial to other numbers and snap the lock closed.

This is elevator #4 (in the middle of Hive13)



This is elevator #5 at the west end of the 3rd floor.

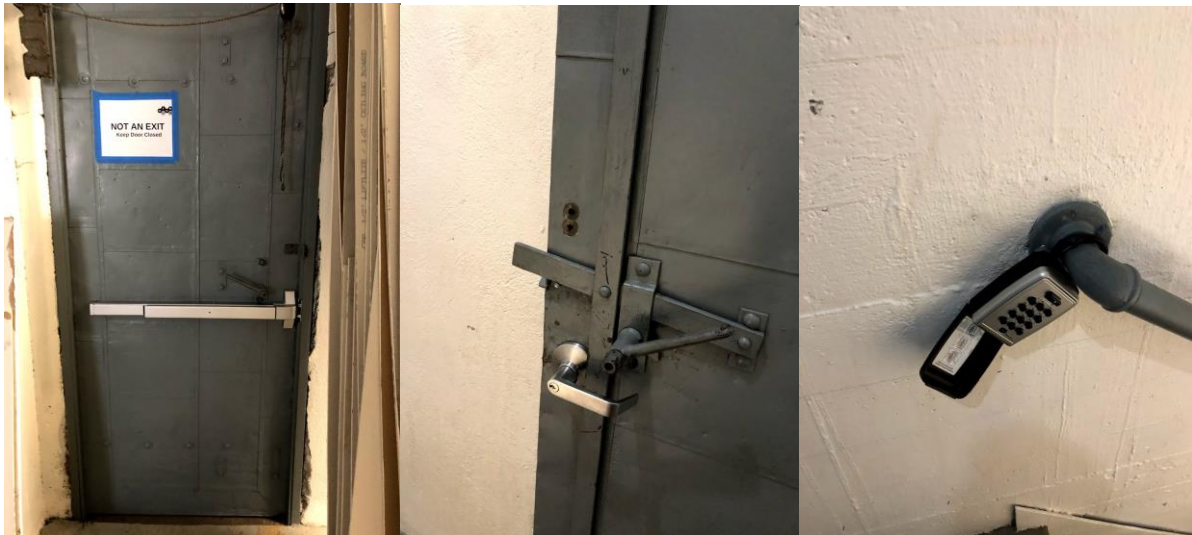


**Stairwell doors.**

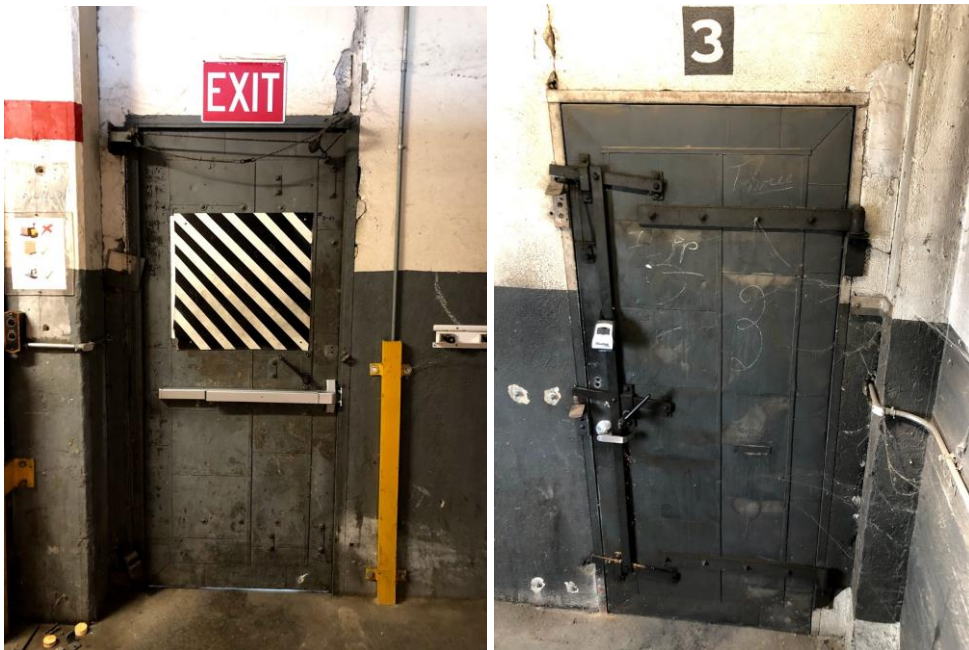
The Stairwell door by the elevator is not a fire exit. It leads to the inside of the building.

Please keep it closed and locked.

The door may be opened using the lock box in the stairwell.



The Stairwell door at the West end of the 3rd Floor is a Fire Exit. If by chance you lock yourself in the stairwell, the key is in the lockbox on the door.





Keep the Big Red Firedoor near the restroom closed and locked at all times. This is not an exit for fire or storms.

