

# **18 & 19 GAUGE BRAD NAILER**

Model 61832

SKU# 208-1784

## **ASSEMBLY & OPERATING INSTRUCTIONS**



# CONTENTS

<b>SUMMARY</b> -----	<b>1</b>
<b>SPECIFICATIONS</b> -----	<b>1</b>
<b>SAFETY WARNINGS &amp; CAUTIONS</b> -----	<b>1</b>
<b>UNPACKING</b> -----	<b>2</b>
<b>SETTING</b> -----	<b>2</b>
<b>CONNECTING THE TOOL TO AN AIR SUPPLY</b> -----	<b>3</b>
<b>LOADING THE FASTENERS</b> -----	<b>3</b>
<b>OPERATING THE TOOL</b> -----	<b>3</b>
<b>REGULAR MAINTENANCE</b> -----	<b>3</b>
<b>TROUBLE SHOOTING</b> -----	<b>4</b>
<b>EXPLODED VIEW DRAWING</b> -----	<b>5</b>
<b>PARTS LIST</b> -----	<b>6</b>

# READ ALL INSTRUCTIONS BEFORE OPERATING THE TOOL

## SUMMARY

You will need the instruction for the safety warning and precautions, assembly instruction, operating and maintains procedures, parts list and diagram. Keep your invoice with this instruction. Write the invoice number on the inside of the front cover. Keep the instruction and invoice in a safe and dry place for future reference.

## SPECIFICATIONS

Characteristic	Value
Minimum Operating Air Pressure	60 PSI
Maximum Operating Air Pressure	95 PSI
Nail Length Range	5/8" -- 1-1/4"
Nail Size	18 & 19 Gauge
Nail Capacity	100
Air Inlet	1/4" NPT
Air Consumption	0.38L at 80PSI
Tool Weight	2.7 lbs

## SAFETY WARNINGS & CAUTIONS

- 1. KEEP WORKING AREA CLEAN.** Cluttered areas invite injuries.
- 2. DON'T ALLOW CHILDREN KEEP AT THE WORKING AREA.** Don't let them handle the tool.
- 3. DO NOT OPERATE THIS TOOL IF UNDER THE INFLUENCE OF ALCOHOL OR DRUGS.** Read warning label on prescriptions to determine if your judgment or reflexes are impaired while taking drugs. If there is any doubt, do not attempt to operate.
- 4. USE SAFETY GLASSES.** Safety glasses should conform to ANSI Z87.1 specifications. Before operating, wear safety glasses against flying debris from the front and side. Safety glasses should be worn when loading, operating, unloading or servicing this tool.
- 5. USE EAR PROTECTION.** The working area may be exposed to high noise levels that can lead to hearing damaged.
- 6. NEVER USE OXYGEN COMBUSTIBLE GASES, BOTTLED GASES OR HIGH PRESSURE COMPRESSED GAS AS A POWER SOURCE FOR THIS TOOL.** The tool may explode and cause serious injury.
- 7. DRESS SAFELY.** Protective gloves and nonskid footwear or safety shoes are recommended when working with and operating this tool. Don't wear loose clothing or jewelry. They can get caught in moving parts. Also, wear a protective hair covering to prevent long hair from getting caught in the tool.
- 8. DO NOT FIRE TO HARD MATERIALS.** Do not attempt to shoot toward hard or brittle material such as concrete, steel or tile.
- 9. WHEN OPERATING TOOL.** keep the proper footing and balance to avoid damaged resulting from losing balance.
- 10. CHECK DAMAGED PARTS.** Before using tool, carefully check if there is any part damaged.
- 11. REPLACE PARTS AND ACCESSORIES.** Only allow use same replacement parts while servicing. Approved accessories and replacement parts are available.
- 12. KEEP ALERT.** Watch what you are doing. Use common sense. Do not operate any tool when you are tired.

13. **STORE THE TOOL.** When not in use, tool should be cleaned, fully assembled and then, stored in a dry location to reduce rust. For safety, keep out of reach of children.
14. **OUTDOORS EXTENSION CORDS.** When air compressor is used outdoors, use only rounded jackets extensions cords intended for outside use. See manufacturer's manual for the AWG required for the compressor's amperage draw.
15. **PAY ATTENTION TO AIR HOSE AND THEIR CONNEATIONS.** Don't trip over hoses. Make sure all connections are tight.
16. **AFTER LOADING THE FASTENERS.** never point the tool at yourself or bystanders.
17. **USE THE CORRECT AIR CONNECTOR.** The connector on the tool must not hold pressure when the air supply is disconnected. If the wrong fitting is used, the tool can be charged with air after being disconnected and still be able to drive a fastener.
18. **WHEN CONNECTING THE AIR.** The tool may possibly fire the fasteners as soon as you plug it in to air hose. Therefore, remove all the fasteners before connecting to the air.
19. **DO NOT DEPRESS THE SAFE BRACKET AND THE TRIGGER WHEN LOADING.**
20. **IF THE FASTENERS ARE JAMMED.** Disconnect the tool from the air and remove the jammed fasteners out.

**WARNING:** The warning, caution, and instructions explained in this instruction manual cannot cover all possible conditions and situations that may occur. It must be understood by the operator that **COMMON SENSE AND CAUTION ARE FACTORS WHICH CANNOT BE BUILT INTO THIS PRODUCT, BUT MUST BE SUPPLIED BY THE OPERATOR.**

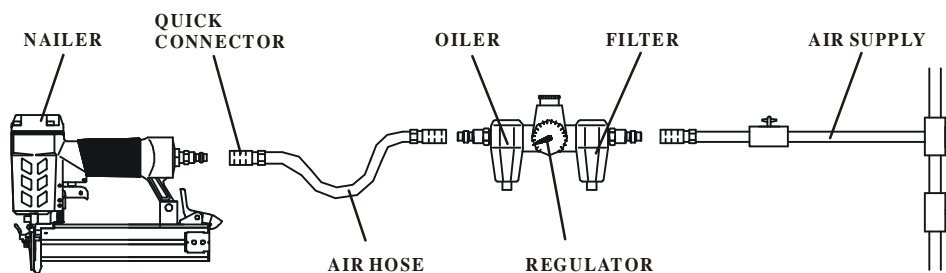
## UNPACKING

When unpacking, check and make sure that all the accessories are included. If anyone is missed or broken, please call seller for help. Refer to the follow lists.

Description	Qty
Nailer	1
S3 Hex Key	1
S4 Hex Key	1
Air Tool Oil	1
Operating instruction	1

## SETTING

Your air tool is fully assembly when you receive it. Before using it, attach the air line and desired air system accessories. See Figure 1 for the recommended accessories and connection order. Be sure the air hose is depressurized when installing or removing adapters to the air line.



**Figure 1**

## CONNECTING THE TOOL TO AN AIR SUPPLY

1. Determine if the tool needs oil and, if necessary, place two drops of oil in the AIR PLUG(GJ003) as shown in Figure 2. If you are using an automatic in-line oiler, check and add oil if necessary.
2. Turn the compressor on and set the regulator to the proper pressure for the size and type of fastener being used.
3. Connect the tool to the air supply (see Setup for air supply connection recommendations).

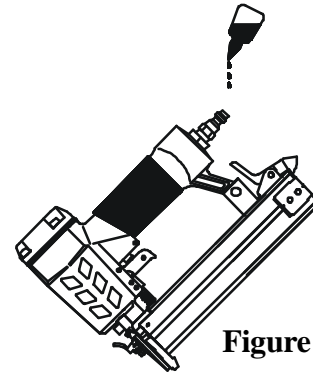


Figure 2

## LOADING THE FASTENERS

1. Depress the LOCK(DB011) to release the MOVABLE MAGAZINE (HM033) and pull the magazine out fully as shown in Figure 3.
2. Place a full clip of the specified type and size fasteners on the FIXED MAGAZINE (GD038), up to 100 fasteners may be loaded in the magazine.
3. Push the MOVABLE MAGAZINE ASSEMBLY forward until it was locked.

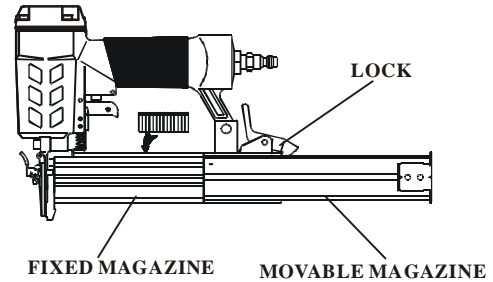


Figure 3

## OPERATING THE TOOL

Test the driving depth in a sample piece of wood before using. If the fasteners are being driven too far or not far enough, adjust the regulator to provide less air pressure or more air pressure.

1. Connect the tool to the air supply. Make sure the air pressure is in correct range denoted in section of SPECIFICATIONS.
2. Load fastener as above the direction given in the section called LOAD THE FASTENER.
3. Hold the Body (KT046) and press the Drive guide (DT047) and safe bracket to work surface , being sure the tool is straight and then gently depress the Trigger (BB007) to drive the fastener.
4. Lift the tool off the work surface.
5. The tool has two driving modes:
  - 1). Put the drive guide on the working surface, lightly push the tool toward the working surface until the safe bracket is depressed, then, depress the trigger to drive the fastener.
  - 2). First, depress the Trigger, then, repeatedly impact the Safe bracket, the tool can repeatedly drive the fasteners. The tool will drive one fastener when the Safe bracket is impacted one time.

## REGULAR MAINTENANCE

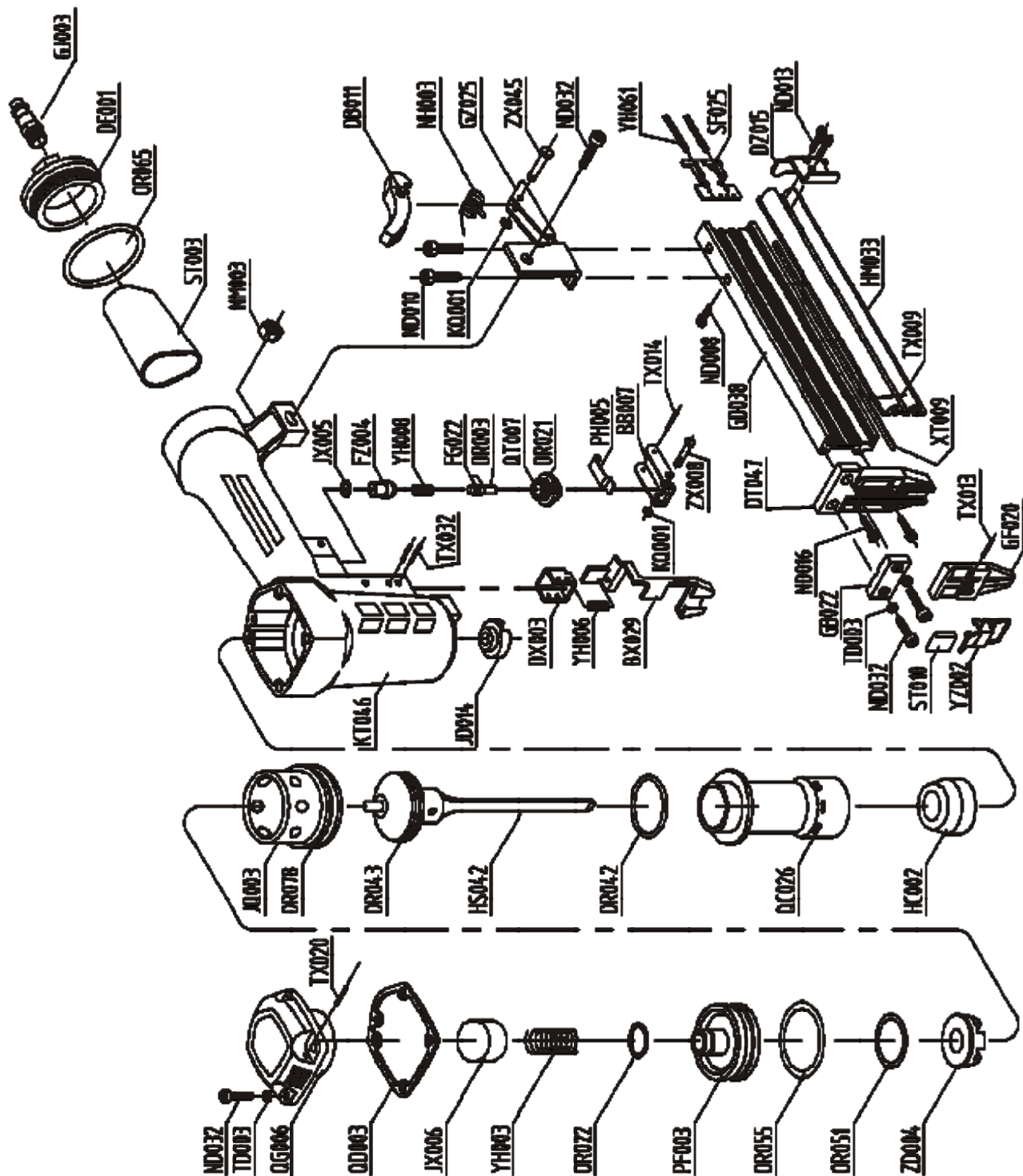
1. Frequent, but not excessive, lubrication is required for best performance. Oil added through the airline connection will lubricate internal parts. An automatic airline oiler is recommended but oil may be added manually before every operation or after about 1 hour of continuous use. Only a few drops of oil at a time are necessary. Too much oil will collect inside the tool and be blown out during the exhaust cycle. **ONLY USE PNEUMATIC TOOL OIL.** Do not use detergent oil or additives, as these lubricants will cause accelerated wear to the seal in the tool.
2. Use a small amount of oil on all moving surface and pivots.
3. Dirt and water in the air supply are major causes of pneumatic tool wear. Use a filter/oiler for better performance and longer life. The filter must have adequate flow capacity for the specific application. Consult the manufacturer's instructions for proper maintenance of you filter.
4. Keep tools clean for better and safer performance. Use nonflammable cleaning solutions ( **CAUTION:** Such solutions may damaged O-ring and other tool parts) only if necessary- **DO NOT SOAK.**

## TROUBLE SHOOTING

**STOP USING THE TOOL IMMEDIATELY IF ANY OF THE FOLLOWING PROBLEMS OCCUR. SERIOUS PERSONAL INJURY COULD OCCUR. ANY REPAIRS OR REPLACEMENTS MUST BE DONE BY A QUALIFIED PERSON OR AN AUTHORIZED SERVICE CENTER ONLY.**

PROBLEM	PROBLEM CAUSE	SOLUTION
Air leaking at Trigger area	<ol style="list-style-type: none"> <li>1. O-ring in trigger valve are damaged.</li> <li>2. Trigger valve head are damaged.</li> <li>3. Trigger valve stem, seal or O-ring are damaged.</li> </ol>	<ol style="list-style-type: none"> <li>1. Check and replace O-ring.</li> <li>2. Check and replace trigger valve head.</li> <li>3. Check and replace trigger vlave stem, seal or O-ring.</li> </ol>
Air leaking between body and drive guide	Damaged bumper.	Check and replace bumper.
Air leaking between body and cylinder cap	<ol style="list-style-type: none"> <li>1. Screw loose.</li> <li>2. Damaged seal.</li> </ol>	<ol style="list-style-type: none"> <li>1. Tighten screws.</li> <li>2. Check and replace seal.</li> </ol>
Blade driving fastener too deeply	<ol style="list-style-type: none"> <li>1. Worn bumper .</li> <li>2. Air pressure is too higher.</li> </ol>	<ol style="list-style-type: none"> <li>1. Replace bumper.</li> <li>2. Adjust the air pressure.</li> </ol>
Runs slowly or has power loss	<ol style="list-style-type: none"> <li>1. Insufficient oil.</li> <li>2. Insufficient air supply.</li> <li>3. Broken spring in cylinder cap.</li> <li>4. Exhaust port in cylinder cap is blocked.</li> </ol>	<ol style="list-style-type: none"> <li>1. Lubricate as instructed.</li> <li>2. Check air supply.</li> <li>3. Replace spring.</li> <li>4. Replace damaged internal parts.</li> </ol>
Tool skip a fasteners	<ol style="list-style-type: none"> <li>1. Worn bumper or damaged spring .</li> <li>2. Inadequate airflow to tool.</li> <li>3. Worn or dry O-ring on piston.</li> <li>4. Damaged O-ring on trigger valve.</li> <li>5. Cylinder cap seal leaking.</li> </ol>	<ol style="list-style-type: none"> <li>1. Replace bumper or pusher spring.</li> <li>2. Check hose and compressor fittings.</li> <li>3. Replace O-ring or lubricate.</li> <li>4. Replace O-ring.</li> <li>5. Replace seal.</li> </ol>
Fasteners are jammed	<ol style="list-style-type: none"> <li>1. Fasteners are wrong size or damaged.</li> <li>2. Magazine or front plate screws are loose.</li> <li>3. Blade in piston assembly is damaged.</li> </ol>	<ol style="list-style-type: none"> <li>1. Use the recommended and undamaged fastenerls.</li> <li>2. Tighten screws.</li> <li>3. Replace piston assembly.</li> </ol>
Tool will not drive down tight	<ol style="list-style-type: none"> <li>1. Worn blade in piston assembly.</li> <li>2. Lack of power.</li> <li>3. Slow cycling and loss of power.</li> </ol>	<ol style="list-style-type: none"> <li>1. Replace piston assembly.</li> <li>2. Adjust to adequate air pressure.</li> <li>3. Check cylindre cap spring for broken coils or reduced length. Check if exhaust port of cylinder cap is restricted.</li> </ol>

# EXPLODED VIEW DRAWING



## PARTS LIST

Refer to the Exploded View Drawing for the location of parts listed below.

ITEM	DESCRIPTION	ITEM	DESCRIPTION
BB007	TRIGGER	OR022	O-RING 15.7×2
BX029	SAFE BRACKET	OR042	O-RING 27.3×2
DB011	LOCK	OR043	O-RING 27.4×3
DE001	END CAP	OR051	O-RING 33.5×3.5
DT047	DRIVE GUIDE	OR055	O-RING 36.3×2.5
DX003	SAFE GUIDER	OR065	O-RING 40.2×2.3
DZ015	STOPPED PLATE	OR078	O-RING 48.5×2.5
FG022	TRIGGER VALVE STEM	PF003	VALVE
FZ004	TRIGGER VALVE HEAD	PH005	TRIGGER SPRING
GB022	PLATE	QC026	CYLINDER
GD038	FIXED MAGAZINE	QD003	GASKET
GF020	FRONT PLATE	QG006	CYLINDER CAP
GJ003	AIR PLUG	QT007	TRIGGER VALVE GUIDE
GZ025	SUPPORT	SF025	FEEDER SHOE
HC002	BUMPER	ST003	SOFT GRIP SLEEVE
HM033	MOVABLE MAGAZINE	ST010	SLEEVE
HS042	PISTON ASSEMBLY	TD003	SPRING WASHER
JD014	JOINT GUIDE	TX009	SPRING PIN
JQ003	COLLAR	TX013	SPRING PIN
JX005	SEAL	TX014	SPRING PIN
JX006	SEAL	TX020	SPRING PIN
KQ001	LOCKING WASHER	TX032	SPRING PIN
KT046	BODY	XT009	RAIL
ND008	SCREW	YH003	SPRING
ND010	SCREW	YH006	SPRING
ND013	SCREW	YH008	SPRING
ND016	SCREW	YH061	SPRING
ND032	SCREW	YZ002	LATCH
NH003	TORSION SPRING	ZD004	STOPPED PIECE
NM003	NUT	ZX008	PIN
OR003	O-RING 5.5×1.5	ZX045	PIN
OR021	O-RING 15×1.9		